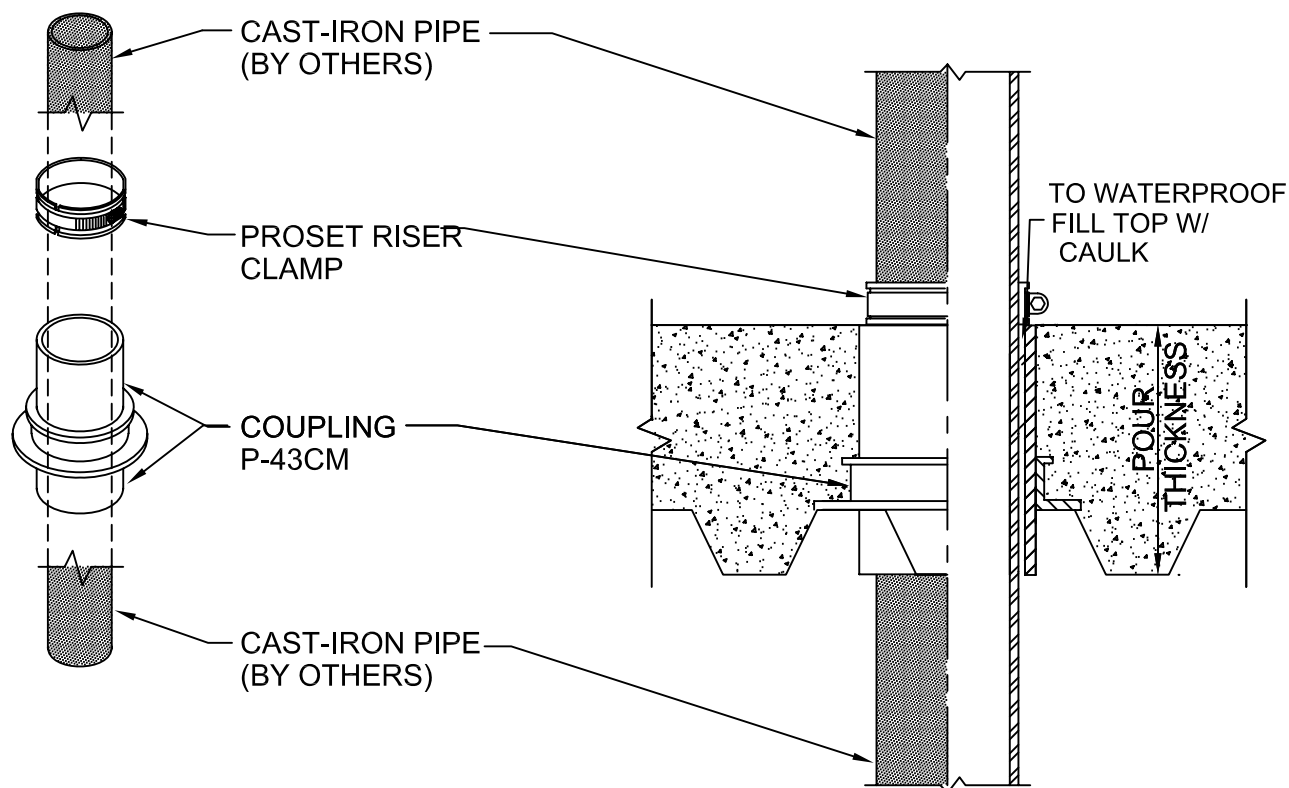


# C.I. STACK STUB - OPTION 4

CONCRETE ON CORRUGATED METAL DECK  
FOR FLOORS



## IMPORTANT NOTES :

1. Cut hole through the deck to accommodate the coupling sleeve to the bottom of corrugations.
2. Mount coupling to the corrugated metal with sheet metal screws, if necessary use a right angle metal strip to span the corrugations. See component drawing No. P-43CM.
3. After the concrete pour, remove protective cap.
4. Insert regular no-hub pipe through the coupling.
5. Fill the small void at top with ProSet caulk to waterproof.
6. Install ProSet Riser Clamp around pipe supported on the floor.
7. Use regular no-hub couplings to connect to other piping.

ALTERNATIVE: Hole can be cut through the metal after the pour by drilling through the interior of the embedded coupling.

For Waterproofing See Drawing B-4804-AC or ACR



W.H. Directory Reference 97 Edition  
Firestop Device  
W.H. Design No. PS/PHV 180-01  
F Rating 3 Hrs.



**PROSET**<sup>®</sup>  
**SYSTEMS**  
FIRESTOP PENETRATOR™

DATE :

1-10-06

DRG. NO.

B-4804-C