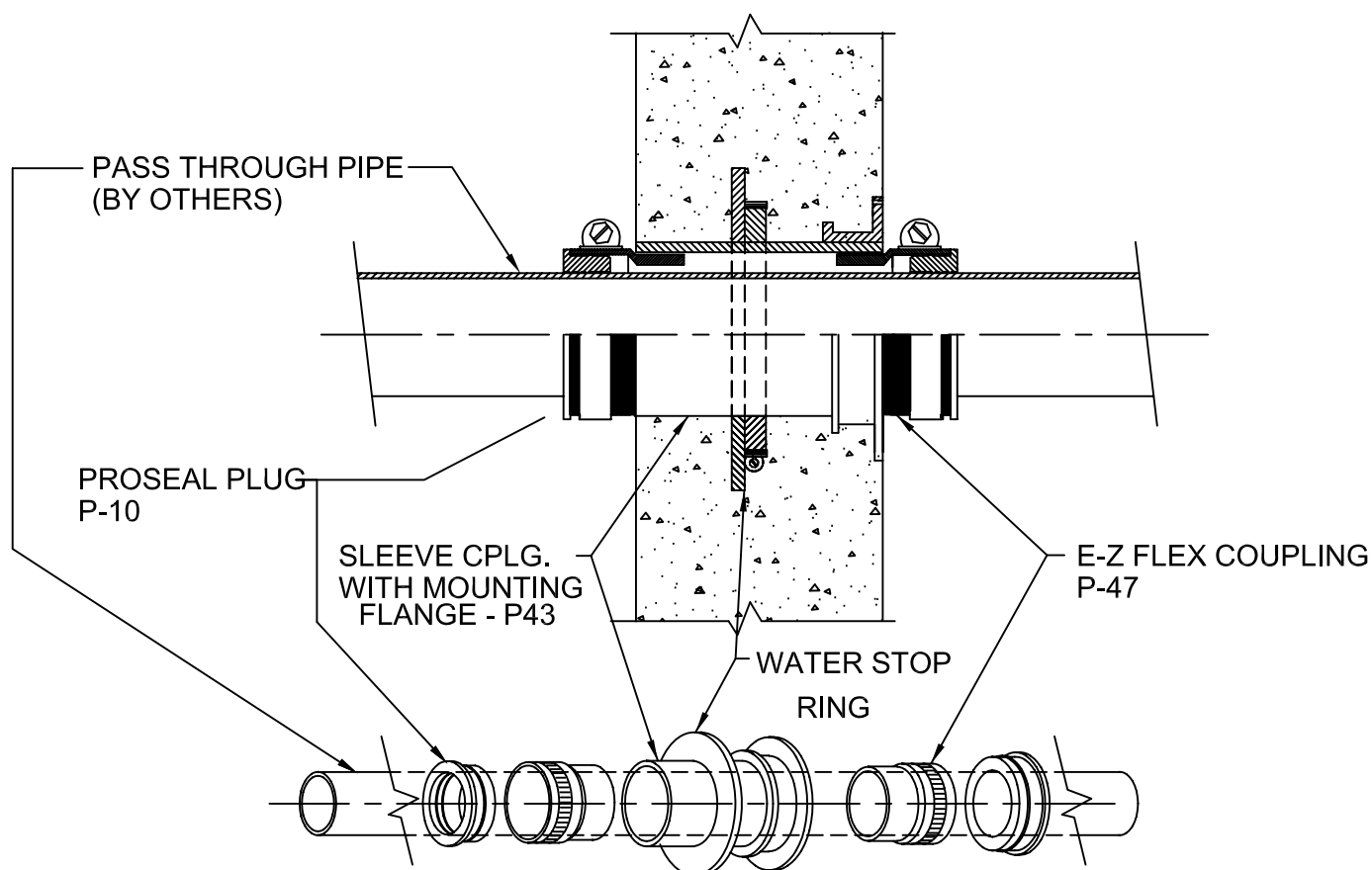


# WATERPROOF PIPE PENETRATION

FOR PASSING THROUGH EXTERIOR WALLS



## IMPORTANT NOTES :

1. Use nails through flange holes to mount the sleeve assembly with the water ring to the concrete form.
2. After concrete is poured, remove protective cap.
3. Insert & Solvent cement the E-Z Flex couplings into one or both sides of the coupling.
4. Insert the pass through pipe through the sleeve and install the split ProSeal Plugs around the pipe into the E-Z Flex couplings, tighten down on the clamp worm to seal and waterproof the penetration.

Note: Use ProSet's Special Solvent Cement to join the flexible coupling into the rigid fitting.



W.H. Directory Reference 97 Edition  
Firestop Device  
W.H. Design No. PS/PHV 120-01  
F Rating 2 Hrs.



**PROSET**<sup>®</sup>  
**SYSTEMS**  
FIRESTOP PENETRATOR™

DATE :  
1-10-08

DRG . NO .  
A-1017-GR