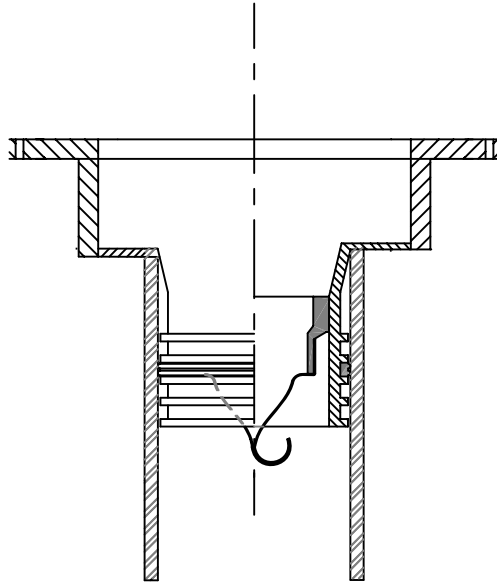


TRAP GUARD DRAIN INSERT PROTECTION

CAN BE USED ABOVE OR BELOW GROUND FLOOR

TRAP GUARD INSERT FITTING FITS
ON TOP OF 6" CAST IRON OR PLASTIC PIPE



PART NO. TG36-IP 6" INSERT FITS INSIDE 6" CAST IRON OR PLASTIC PIPE

IMPORTANT NOTES :

1. The Trap Guard device comes inside a PVC insert that fits on top of a 6" Cast Iron or PVC pipe.
2. Use an adhesive caulk around the bottom of flange to seal the Trap Guard to the pipe.
3. Then the part press fitted onto the top of a 6" open ended pipe.

Note: The flow rate of this Trap Guard fitting has been tested at 34GPM
Not for use on waxed or grease-laden-floors

Note: Care should be taken not to touch the flexible material with the primer or solvent cement.

MAINTENANCE INSTRUCTIONS:

The Trap Guard device should be inspected periodically for build up of any type debris.
The device should then be flushed out thoroughly with clear warm water.



NO FIRE RATINGS ARE
REQUIRED FOR UNDERGROUND
PIPING OR OPENINGS



PROSET[®]
SYSTEMS
FIRESTOP PENETRATOR™

DATE :

8-01-11

DRG . NO .
TG-36-IPD