

# FIRESTOP SYSTEMS

## ProSet Systems, Inc.

1355 Capital Circle Lawrenceville, GA. 30043-5866 U.S.A.

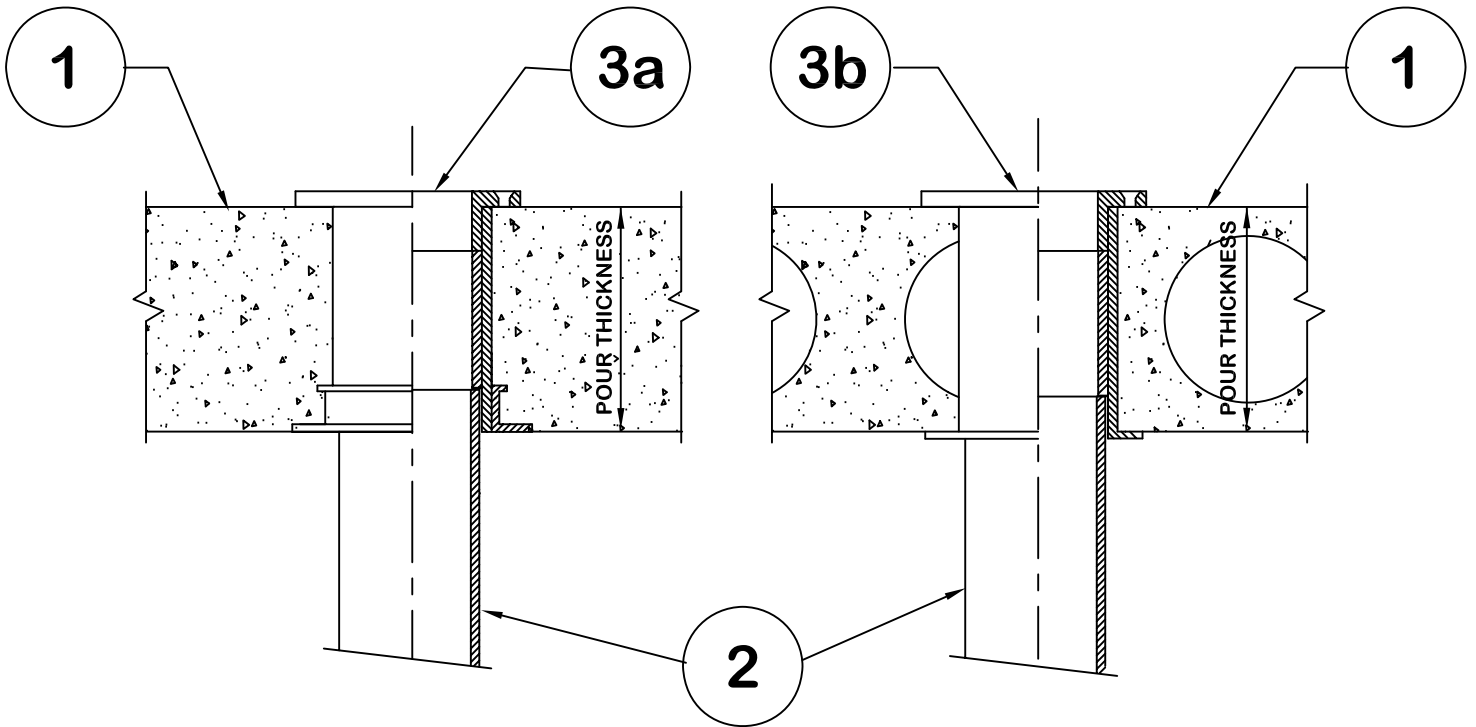
### Design No. PS/PH 120-15

Horizontal (Floor) - See item 1.

Ratings: ASTM E-814 - 2 Hrs. & 3 Hrs. (F), 2 Hrs. (T) See item 1

CAN/ULC-S115 - 2 Hrs. & 3 Hrs. (F/FH), 2 Hrs. (FT/FTH) See item 1.

Test Pressure Differential - 50 Pa (0.20 in. of Water) Minimum



#### 1. Floor:

Minimum 4" thick normal density concrete slab or 7-1/2" thick hollowcore precast concrete floor units. Fluted decks with 2-1/2" concrete slab, the FT/FTH rating is 1Hr.

When concrete or Hollow core is 7 1/2" or more the FT/FTH rating is 3 Hrs.

#### 2. Pipe Material and Pipe Support:

3" or 4" ABS or Cellular core PVC. - Closet or 1/4 bend can be supported by solvent cementing to the embedded firestop device.

#### 3. Firestop Device:

3a. Cast-in Part numbers P3544H\*, 3" and P4544H\*, 4".

3b. Inserted Sleeve -Part numbers P3554H\*,3" and P4554H\*,4".- 4" Core for 3" - 5" core for 4".

Part numbers with built-in stops - P35458\*, 3" and P45458\*, 4"

#### Water Closet (Not Shown)

Floor mounted closet mount to closet flange.

**\* Components Bearing the Warnock Hersey International Certification Mark.**