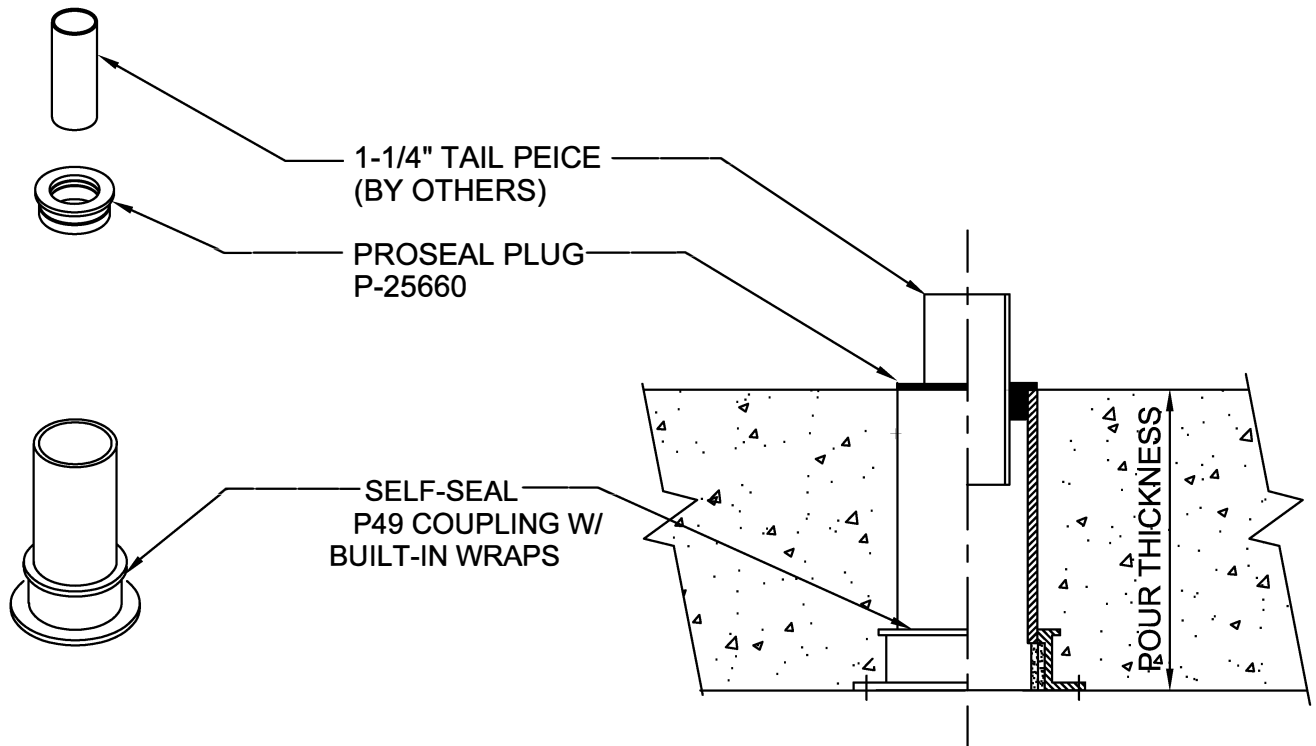


# BIDET SLEEVE ASSEMBLY

CONCRETE ON WOOD FORM  
FOR FLOORS



SEE DRAWINGS C-6510-B-C & D FOR METAL OR CORED DECKS

## IMPORTANT NOTES:

1. Use nails through the flange holes to mount the self-seal flange to the deck.
2. After the concrete pour, insert the Bidet ProSeal Plug on the topside, then insert the tail piece into the ProSeal Plug.
3. Connect plastic pipe and trap to the bottom of the drain stub and complete the installation.



W.H. Directory Reference 97 Edition  
Firestop Device  
W.H. Design No. PS/PH 120-07  
F Rating 2 Hrs.



**PROSET**<sup>®</sup>  
**SYSTEMS**  
FIRESTOP PENETRATOR™

DATE :  
5-31-21  
DRG . NO .  
C-6610-A