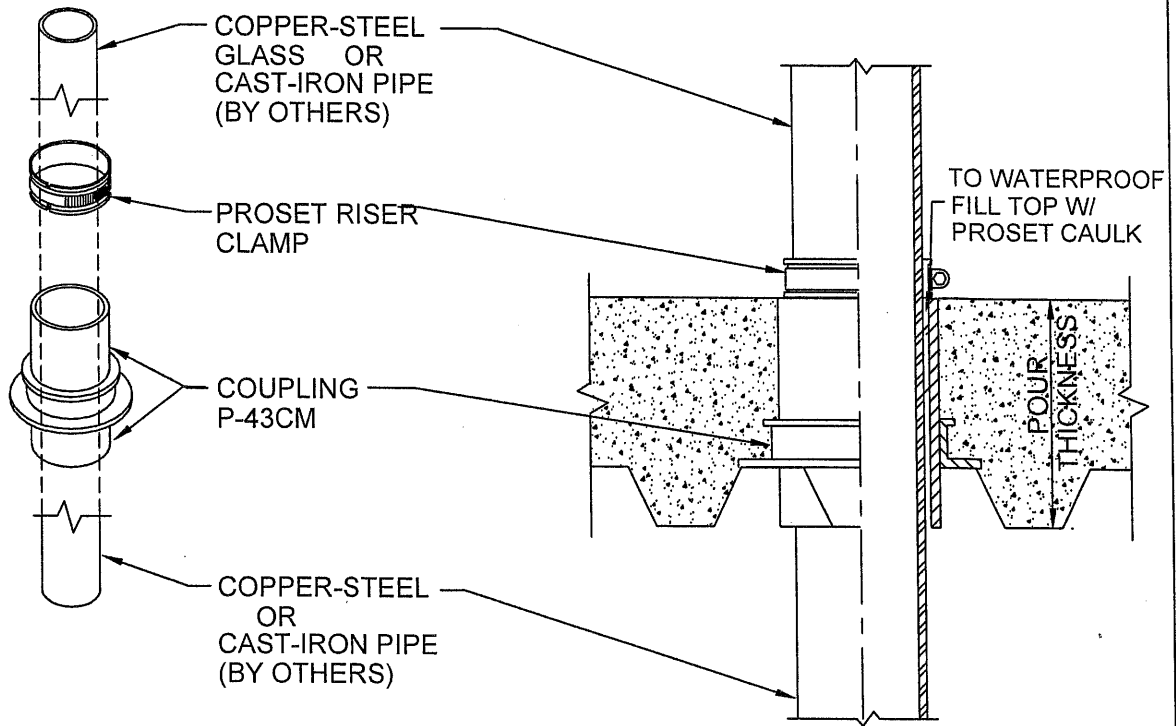


RISER CLAMP DEVICE

CONCRETE ON CORRUGATED METAL DECK
FOR FLOORS



Size	Part No.	Description	Price	Unit Total
2"	P2543H-B or G-CM A02214	2" Sleeve Coupling	6.50	9.45
		2" Riser Clamp	2.95	
2½"	P3843H-CM A03212	2½" Sleeve Coupling	11.00	14.85
		2½" Riser Clamp	3.85	
3"	P3543H-B or G-CM A03214	3" Sleeve Coupling	9.15	12.45
		3" Riser Clamp	3.85	
4"	P4543H-B or G-CM A04214	4" Sleeve Coupling	11.45	15.60
		4" Riser Clamp	4.15	
5"	P6843H-CM A05214	5" Sleeve Coupling	23.15	29.75
		5" Riser Clamp	6.60	
6"	P6543H-B-CM A06214	6" Sleeve Coupling	17.40	24.15
		6" Riser Clamp	6.75	

Use "B" Black letter sleeve pipe for cast iron, glass or steel or "G" Green for copper or plastic
Use suffix CU for copper -CI for cast iron -S for steel pipe when ordering Riser Clamps.



W.H. Directory Reference 97 Edition
Firestop Device
W.H. Design No. PS/PHV 180-01
F Rating 3 Hrs.



PROSET[®]
SYSTEMS
FIRESTOP PENETRATOR[™]

DATE :
8-01-18

DRG. NO.
A-1014-C