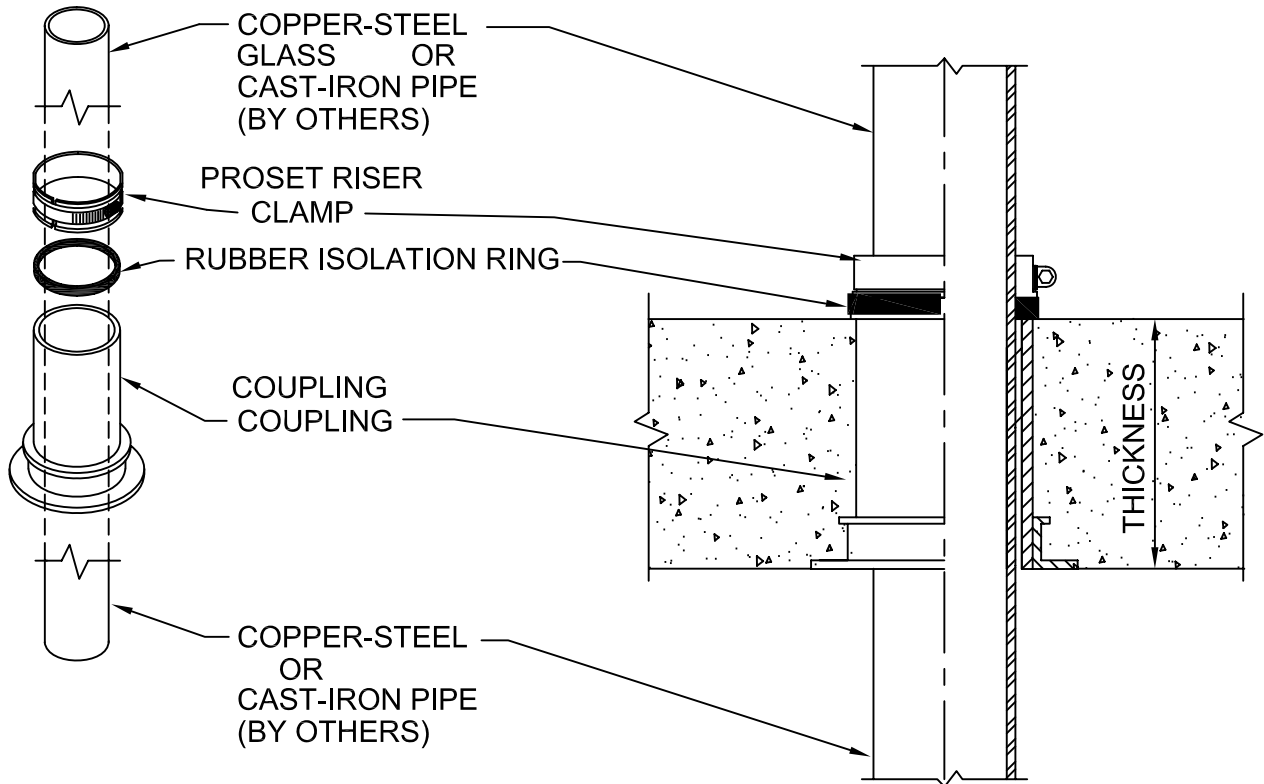


RISER CLAMP DEVICE

WITH RUBBER ISOLATION RING
CONCRETE ON WOOD FORM
FOR FLOORS OR WALLS



IMPORTANT NOTES :

1. Use nails through flange holes to mount the coupling to deck.
2. After the concrete pour, remove protective cap.
3. Insert the copper, c.i., glass or steel pipe through the coupling.
4. Install the special rubber isolation ring around the pass through pipe at the top of the sleeve.
5. Install the riser clamp on top of the isolation ring and tighten down to the top of the sleeve.
6. When ordering riser clamp-Use suffix CU for copper-CI for cast iron or S for glass & steel pipe.
7. Use Black letter Sleeve Pipe for glass, steel or cast iron-Red letter pipe for copper.



W.H. Directory Reference 99 Edition
Firestop Device
W.H. Design No. PS/PHV 180-01
F Rating 3 Hrs.



PROSET[®]
SYSTEMS
FIRESTOP PENETRATOR™

DATE :
1-10-06

DRG . NO .
A-1014-AIR