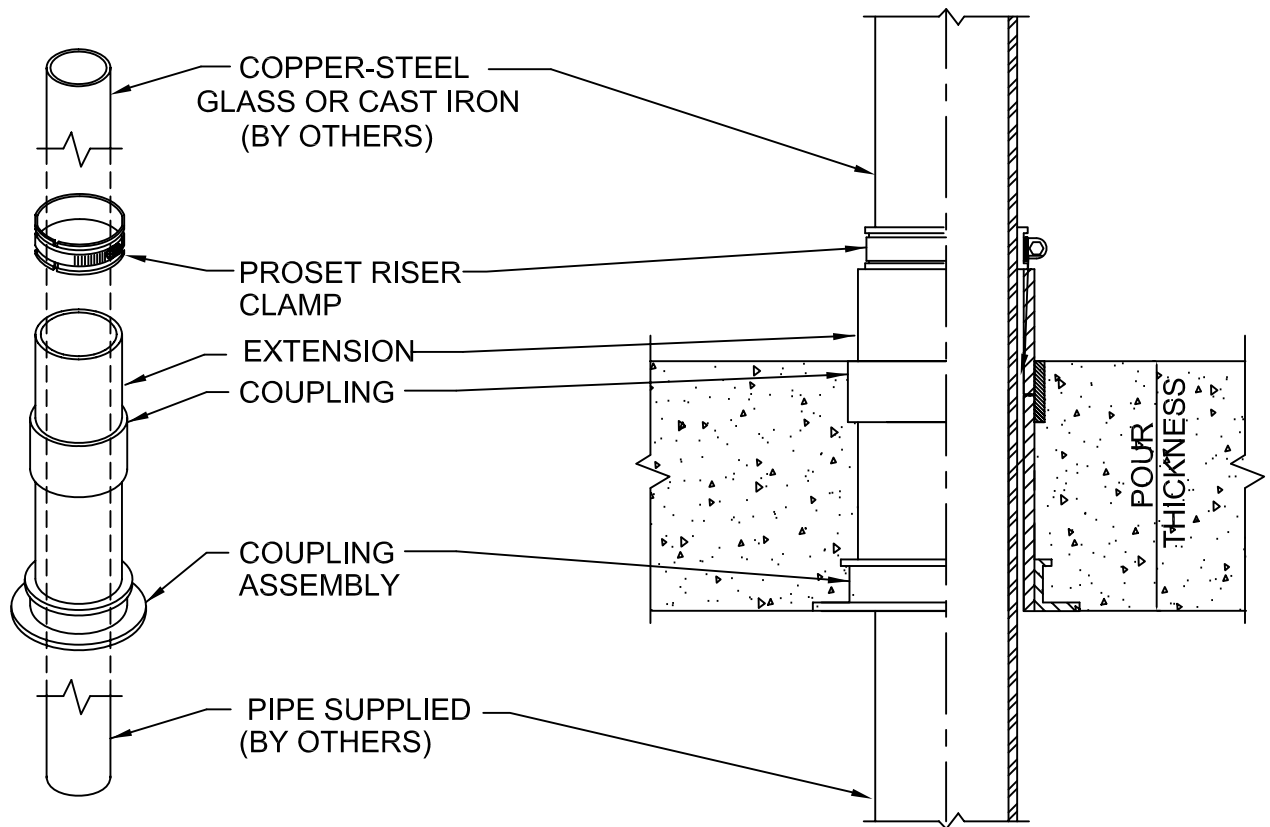


# WATER RESISTANT RISER CLAMP DEVICE

CONCRETE ON WOOD FORM  
FOR FLOORS



Use temporary caps on extensions when sealing off floors.

## IMPORTANT NOTES :

1. Use nails through flange holes to mount the coupling to the deck.
2. After the concrete pour, remove protective cap that is flush with with concrete floor.
3. Solvent cement the sleeve extension into the coupling to raise the sleeve above the floor.
4. Install the pass through pipe through the sleeve and the top extension.
5. Install the proper size ProSet Riser Clamp around pipe onto the sleeve then tighten clamp.
6. When ordering riser clamp-Use suffix CU for copper-CI for cast iron or S for glass & steel pipe.
7. Use Black letter Sleeve Pipe for glass, steel or cast iron-Red letter pipe for copper.



W.H. Directory Reference 99 Edition  
Firestop Device  
W.H. Design No. PS/PHV 180-01  
F Rating 3 Hrs.



**PROSET**<sup>®</sup>  
**SYSTEMS**  
FIRESTOP PENETRATOR™

DATE :  
1-10-06

DRG . NO .  
A-1014-AC