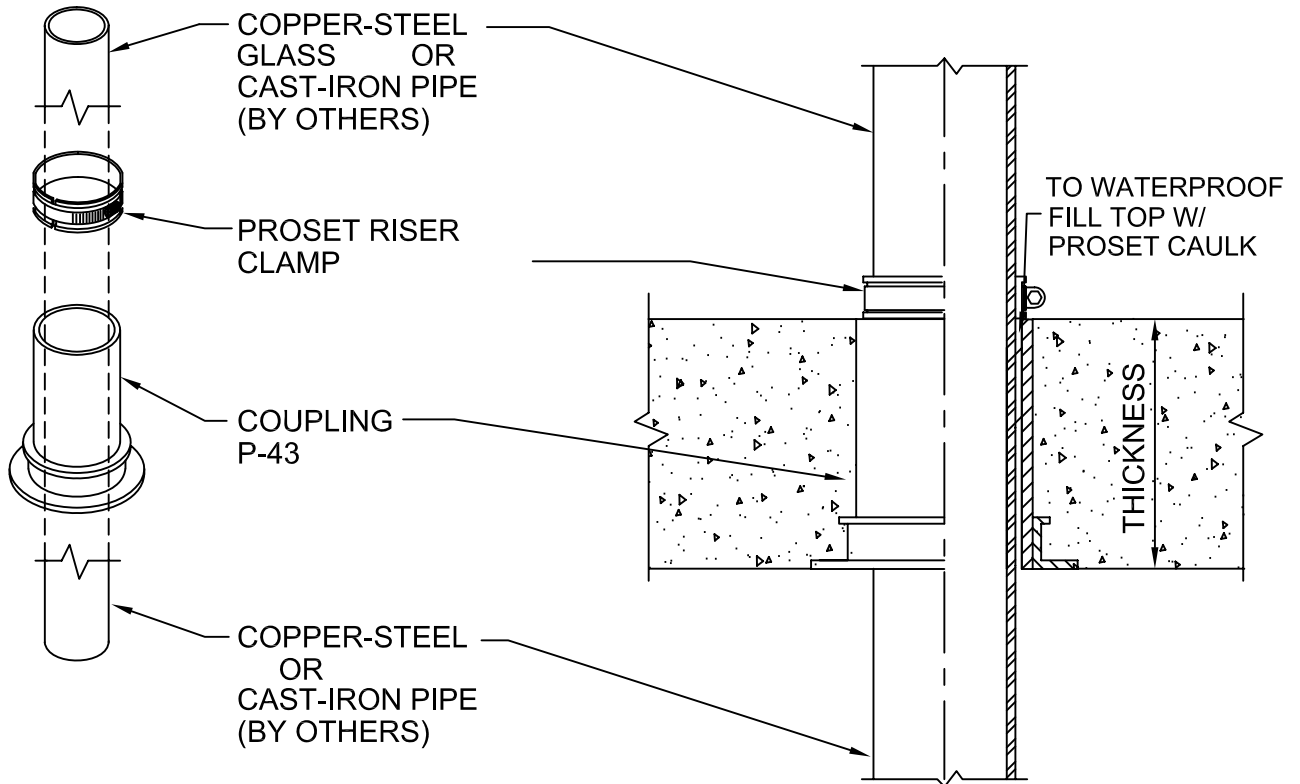


RISER CLAMP DEVICE

CONCRETE ON WOOD FORM
FOR FLOORS OR WALLS



IMPORTANT NOTES :

1. Use nails through flange holes to mount the coupling to deck.
2. After the concrete pour, remove protective cap.
3. Insert the copper, c.i., glass or steel pipe through the coupling.
4. Fill void at top with ProSet caulking to waterproof.
5. Install riser clamp around pipe to support and draft stop. Clamp on both sides for walls.
6. When ordering riser clamp-Use suffix CU for copper-CI for cast iron or S for glass & steel pipe.
7. Use Black letter Sleeve Pipe for glass, steel or cast iron-Red letter pipe for copper.



W.H. Directory Reference 99 Edition
Firestop Device
W.H. Design No. PS/PHV 180-01
F Rating 3 Hrs.



PROSET[®]
SYSTEMS
FIRESTOP PENETRATOR™

DATE :
1-10-06

DRG . NO .
A-1014-A