

# FIRESTOP SYSTEMS

**ProSet Systems, Inc.**

1355 Capital Circle Lawrenceville, GA 30043-5866 U.S.A.

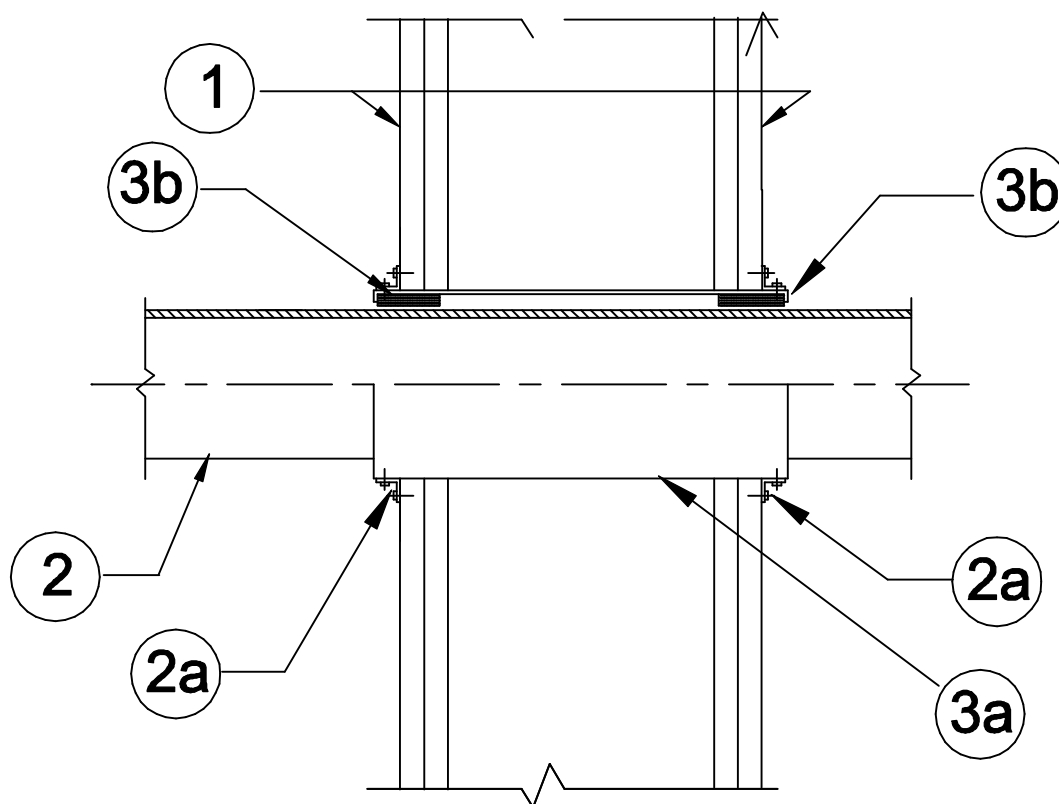
**Design No. PS/PV 120-07**

Vertical (wall)

Ratings: ASTM E-814 - 2 Hrs. (F), 1 Hrs. (T)

CAN/ULC-S115 - 2 Hrs. (F/FH), 80 Min. (FT/FTH)

Test Pressure Differential - 50 Pa (0.20 in. of Water) Minimum



## 1. Wall:

Gypsum board / steel or wood stud wall, with minimum 2-1/2" cavity width, having a fire resistance rating of 1 or 2 Hrs.

## 2. Pipe Materials & Support:

Maximum 4" diameter Vented or Unvented ABS, solid or cell-core PVC or F.R.P.P.

2a. Two right angle metal clamps are attached to the metal sleeve on each side with # 6 sheet metal screws and to the gypsum wall with # 6 sheet metal screws into two plastic inserted drywall anchors.

## 3. Self Seal 26 Gauge Metal Wall Sleeve Firestop Device\*:

3a. ProSet 26 ga. metal sleeve\* with a intumescent wrap strip inside both ends of the 8" long sleeve. The 2" sleeve is sized for a 3" diameter hole, the 3" for a 4 1/2" hole and the 4" for a 6" hole.

3b. The 2" sleeve has a 1/4" thick by 1 1/2" wide wrap strip, the 3" has a 3/8" by 1 1/2" wide wrap strip and the 4" has a 5/8" thick by 1 1/2" wrap strip.

**\* Component Bearing the Warnock Hersey International Certification Mark.**