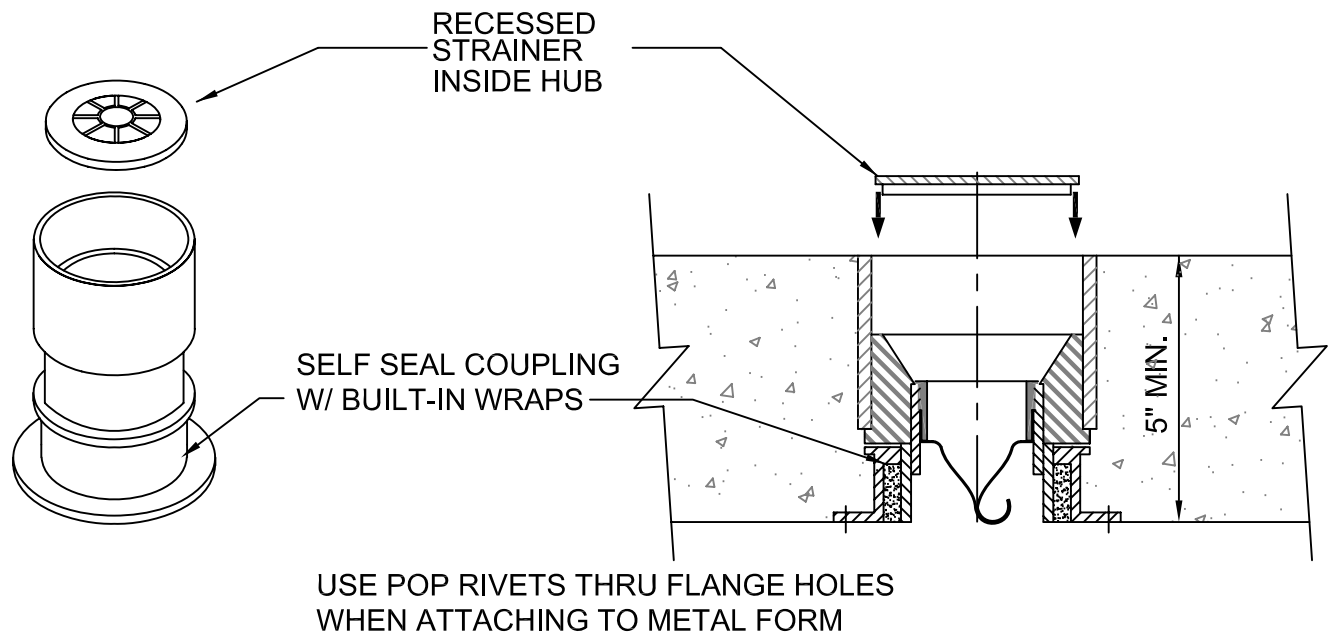


TRAP GUARD HUB/FLOOR COMBO DRAIN

CONCRETE ON WOOD OR STEEL FORM
FOR UTILITY ROOM FLOORS



STRAINER CAN BE FLUSH WITH FLOOR FOR FLOOR DRAIN OR
RECESSED 1-1/4" INTO HUB FOR COMBO HUB/FLOOR DRAIN

IMPORTANT NOTES :

1. Use nails or pop rivets through the fastening flange holes to mount the self-seal flange to the deck.
2. The drain comes with a hard test cap solvent cemented to the top for water testing when required.
3. After the concrete pour and water test, knock out the test cap to use the combo hub/floor drain.
4. Connect the 2" PVC branch piping and trap to the bottom of drain stub.
5. The condensate drain and the relief valve can be piped to the strainer opening using an air break fitting.

If the trap guard device should get damaged or impaired in any way, the device can be easily removed. A puller tool attaches to the two built-in lugs inside of the Trap Guard for easy removal & replacement.



W.H. Directory Reference 01 Edition
Firestop Device
W.H. Design No. PS/PH 120-07
F Rating 2 & 3 Hrs.



PROSET[®]
SYSTEMS
FIRESTOP PENETRATOR™

DATE :
1-10-06

DRG. NO .
C-6323-ATG